



# NEWSLETTER NEWSLETTER

Overton Veterinary Services, LLC  
Practice Management Division  
108 Clinic Drive, P.O. Box 307  
Overton, NE 68863  
Phone: 308-987-2513 FAX: 308-987-2685

July 2009

## Features

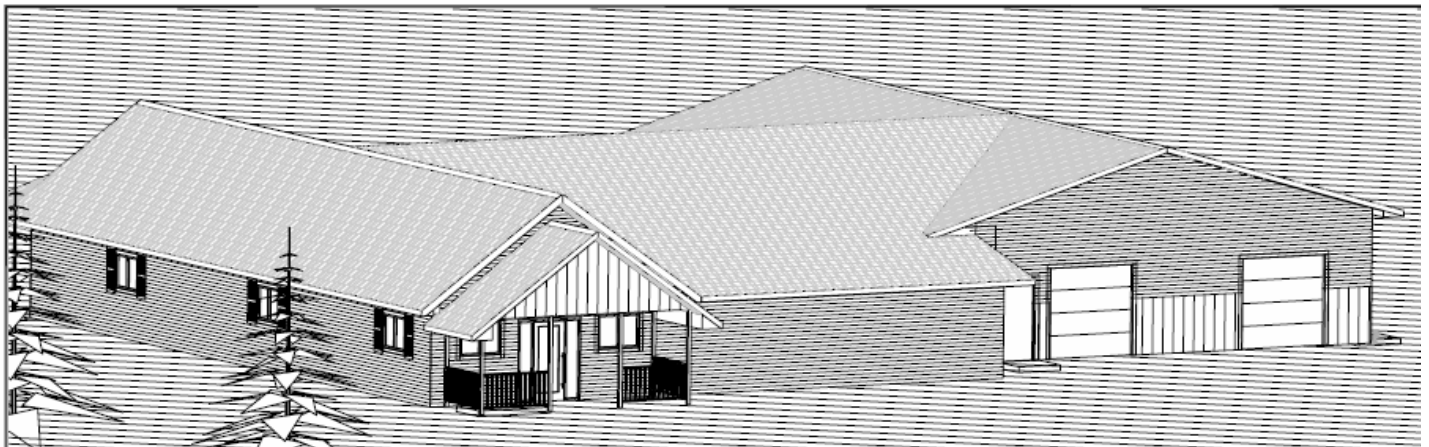
- 1.) Vaccine Recall
- 2.) New Facility Under Construction
- 3.) Preconditioning Recommendations
- 4.) Stay Ahead of Pinkeye This Year
- 5.) Bovine Tuberculosis Update
- 6.) Reproductive Ultrasound Examination

## VISTA/ONSET VACCINE UNAVAILABLE

Last year we introduced you to several new viral vaccines from Intervet/Schering Plough, including Onset IN and Vista Once. These vaccines still show promise for use in the future, but have been voluntarily recalled by the company for issues relating to the consistency of the manufacturing process. There are no safety concerns with the recall of this product, but until the manufacturing issues are resolved, Overton Veterinary Services will not be offering these vaccines. We have comparable products available for use, and would be happy to discuss these as preconditioning time approaches. If you have questions regarding this issue, please call OVS and ask to speak to a veterinarian.

## New Facility to Open Fall 2009

Overton Veterinary Services will be moving into our new facility this fall. Completion date is tentatively October 15, 2009. The new facility is 3 miles west of our current facility on Road 440 and Hwy 30. The facility will be approx 7500 square feet and will greatly improve our ability to serve our clients. It will include indoor cattle working facilities, indoor equine facilities, 2 small animal exam rooms, lab and surgery rooms, a large boarding room, a new larger OB room, and more office space.



## Calf Preconditioning

Now is the time to think about the preconditioning program for your calves. Pinkeye problems have started and the summer pneumonia problems are soon to start. Please remember giving any vaccination prior to any problems is more effective than treating an outbreak. Our core recommendations are:

- Bovishield 5
- Overton Autobac (Pasteurella and Haemophilus)
- Overton Pinkeye

Please call and ask to speak to one of our veterinarians today to tailor a program to fit your individual needs.

## Pinkeye

Last summer was a terrible year for pinkeye infections. Now that temperatures are climbing, clients are beginning to see flies and pinkeye cases are rising. The clinic has cultured eyes to determine bacteria present, and we have found that the majority of the bacterial isolates are Moraxella bovoculi, **which is different** than Moraxella bovis, the common bacterial isolate in commercial bacterins on the market today. To combat this problem, OVS has an autogenous vaccine which includes multiple strains of both bacterial pathogens isolated in our area. This vaccine, like most commercial products, recommends a booster dose 3-4 weeks after the initial vaccination. *(Continued on Page 2)*

Treatment of pinkeye in pastures is time consuming and labor intensive. Our treatment has included subcutaneous injections of LA200® or Biomyacin®, eye injections of penicillin followed by an eye patch or suture. Pour-on is given for **fly control**. OVS has also developed a Moraxella bovoculi pinkeye bacterin for use in cattle.

**Prevention** centers around an adequate **vaccination** program for pinkeye (including Moraxella bovoculi) and **fly control**. We also recommend additional herd medication by adding 5 pounds of feed grade chlortetracycline (CTC) to each 50 pounds of OVS Range Mineral and make sure that consumption averages 3-4 ounces per head per day. Lack of a good **mineral program** going into the summer months can also have an impact on predisposition to pinkeye. Trace mineral nutrition, especially copper and selenium, is critical for overall health and immunity. Calves have a tendency to develop **trace mineral deficiencies** by mid/late summer if adequate mineral intake has not occurred since calving.

## BOVINE TUBERCULOSIS UPDATE

The Nebraska Department of Agriculture announced June 1<sup>st</sup> that a cow from a herd of beef cattle in Rock County had tested positive for bovine tuberculosis (TB). The investigation of this incident has resulted in 43 herds being quarantined from 14 different counties. Animals included in the quarantine are those from herds known to have been in neighboring pastures to the infected herd in the last two years. Herd testing of the quarantined animals is currently underway, and has not revealed any additional positive animals to date.

Bovine tuberculosis is a chronic bacterial disease of cattle that occasionally affects other species of animals, and can be spread to humans. Infections can be spread by inhalation of aerosols or drinking unpasteurized milk. Clinical signs are minimal early in the disease, but animals with chronic infection can exhibit emaciation, weakness, anorexia, low-grade fever, and pneumonia with chronic cough.

Infections can be dormant for months to years in cattle, so biosecurity with strict isolation of new herd additions for at least 60 days is advisable. Bovine tuberculosis can survive for long periods of time in the soil, and can possibly be transmitted from clothes, vehicles and trailers. There is no way to effectively treat this disease; only test-and-slaughter techniques are guaranteed to eradicate the disease. Testing is done using the tuberculin skin test in the caudal tail fold of cattle.

Weekly updates on the status of this current investigation are available online at [www.agr.ne.gov](http://www.agr.ne.gov), under the bovine TB button on the right side of the home page. If you have additional questions, please call OVS and ask to speak to a veterinarian.

## Reproductive Ultrasound Evaluation

### Early pregnancy diagnosis:

Using ultrasound, pregnancy diagnosis can be made as early as day 26 in cattle with near 100% accuracy.



### Accurate Fetal Aging:

Fetal age can be determined within a range of only a few days. This allows for grouping bunches of heifers or cows into tight calving groups, determining which cows were AI'd or bull bred, or sorting off late calvers. Calving seasons can be shortened to whatever length is desired. Accurate aging becomes more difficult as we get much beyond 90-100 days of gestation.

**Fetal Sexing:** The sex of the fetus can be determined with near 100% accuracy between days 60-85 of gestation. Fetal sex can be determined with limited success after day 90.



### Fetal Viability:

Ultrasound gives us the ability to identify cows that have fetuses that are dead and no longer viable and can cull these animals. Twins can also be identified at this time. This is not possible without ultrasound.

### Economic advantages:

On average, heifers and cows diagnosed pregnant by ultrasound and grouped by calving dates brought a \$50-\$70 per head premium. Determining pregnancy in July-August allows for marketing of open cows at a higher price before the typical October-November increase in market cow numbers.

We have a portable hydraulic chute that we use when ultrasounding cattle. This allows for easy processing of large numbers of cattle safely and allows us to give you the most accurate information possible. We can easily bring it to your ranch and set it up in just a few minutes.



Pregnancy diagnosis by ultrasound is quicker, more accurate, provides more information, and can be done significantly sooner than normal rectal palpation.

Ultrasound can give producers a lot of information if done at the appropriate time. In general, a good time to plan on ultrasounding is 30 days after bulls are pulled. Please give us a call and we can determine the best plan that works for your operation.

### Please Send Us Your Email Addresses

Overton Vet Services will begin sending our newsletters and other timely information to our clients via Email starting this fall. Please call our office and update your information so we can add you to our database.

